

Manage the entire design



Stay in control

Imagine finding design data in seconds. Sharing digital prototyping information securely with team members across the world. Knowing who revised designs—and when.

Contents

Data management for workgroups	3
Data search and reuse	4
Revision control.....	5
Release and engineering process management	6
Simple administration and configuration.....	7
Business system integration and external collaboration	8
The Autodesk Vault family of products	9

Part of the Autodesk Digital Prototyping solution, the Autodesk® Vault family of data management software helps you keep track of all your digital design data and documentation. It securely stores and manages data in a central location, helping teams quickly create, share, and reuse digital prototyping information. With Autodesk® Vault Workgroup, Autodesk® Vault Professional, and Autodesk® Vault Office software, you'll spend less time chasing down files and more time creating innovative designs.

Connect your teams

Enhance team productivity with support for team-based design. Work closely with others on projects without putting design data at risk. Multiuser functionality lets you control access to design data so your entire workgroup—from managers to engineers and designers—can participate in the design process. Track and manage all data related to each digital prototype in one secure, central location. And because the Vault product family integrates with Autodesk® design applications, it's easier and faster than ever to manage accurate data from concept through manufacturing.

Improve productivity

Develop products faster with tools that help you reuse data and minimize rework. Instead of starting a complex model or drawing set from scratch, use a similar digital prototype as a starting point for a new design. Saved searches and shortcuts speed up data search, while productivity tools enable you to manipulate design files without breaking application-specific links. And with data organization tools, you can control indexing and access across file types—so you can improve data sharing and searching based on property sets.

Control revisions

Making changes doesn't have to interrupt your workflow—you can control design iterations from within your design application. Capture the entire history of design concepts so you can push the boundaries of your work, or revert to older revisions if needed. Secure, release, and track data revisions—granting team members access to only the correct revisions of the files. With Vault Workgroup, Vault Professional, and Vault Office, you maintain control over the digital prototype as it moves through the design and production process.

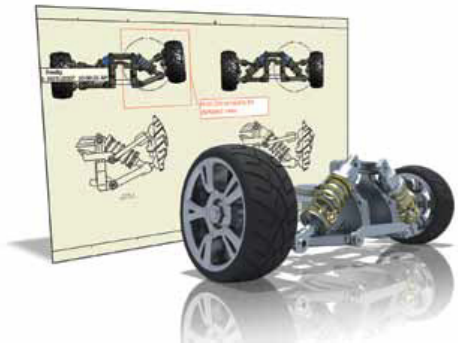
Data management tools

Accelerate development cycles and optimize your investment in design data with features that help you organize, manage, and track key design and release management processes. An enhanced set of features facilitates:

- Data management for workgroups
- Data search and reuse
- Administration and configuration
- Revision control



Image courtesy of Vimek AB.



Data management for workgroups

Improve team productivity without disrupting natural design workflows.

Integration with Autodesk software

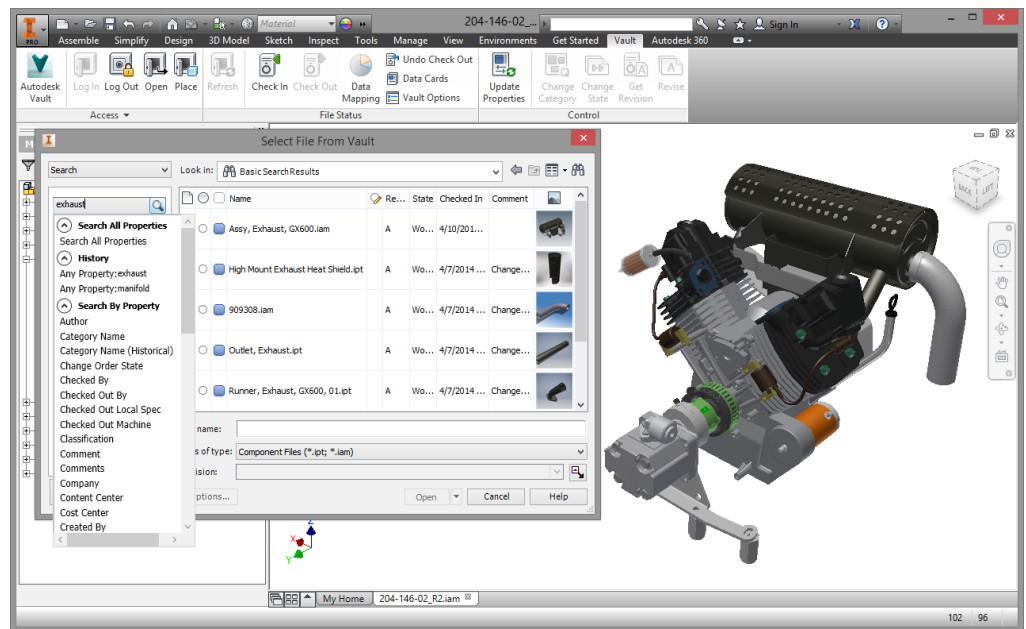
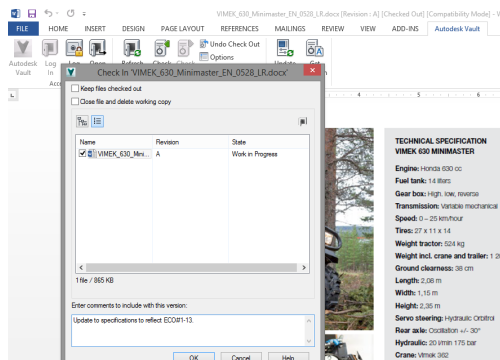
Integrate the Autodesk Vault family of products with more than 30 Autodesk applications, such as Autodesk® Inventor®, AutoCAD® Electrical, AutoCAD® Mechanical, and AutoCAD® software. This deep integration makes it easier to manage data associated with your digital prototype from engineering through manufacturing—saving time and helping to preserve data accuracy.

Concurrent design

Team members can work on a digital prototype without overriding each other's data thanks to multiuser functionality. Team members check out a design before making modifications, then check it back in when they're done. With everyone working together, you can better balance resources, speed projects to completion, and meet tight deadlines.

Microsoft Office document management

Track and manage all your reports, spreadsheets, presentations, and important email communications in a single location and associate them to the relevant project or design files. Vault Workgroup, Vault Professional, and Vault Office are fully integrated into Microsoft® Word®, Excel®, PowerPoint®, and Outlook®.



Multisite product development

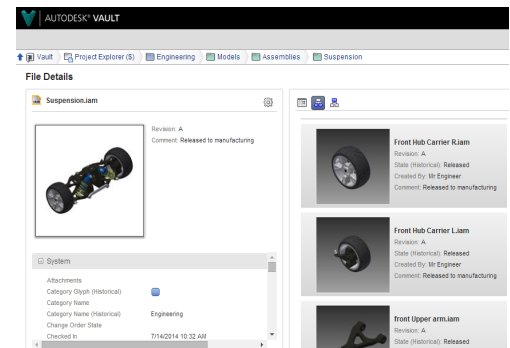
Work together easily and efficiently—no matter where your team members are in the world. Track and manage all your data in a central, secure location and share working files across a wide area network. Engineers worldwide can work on designs confidently, knowing they are using the latest revision of the file.

Connections for the extended team

Bring the entire team together by centrally managing files created both inside and outside of engineering with Vault. Include additional product documentation created in any format—from product imagery to quotes, specs, maintenance reports, operating manuals, field service reports, assembly guides, inspection reports, service bulletins, and product feedback reports.

Web client

Vault is available through a web application to provide flexible access to team members requiring access to product data. Use the web app to search, view, print, and mark up design data and documentation, check-in or check-out files, or review items and BOMs.

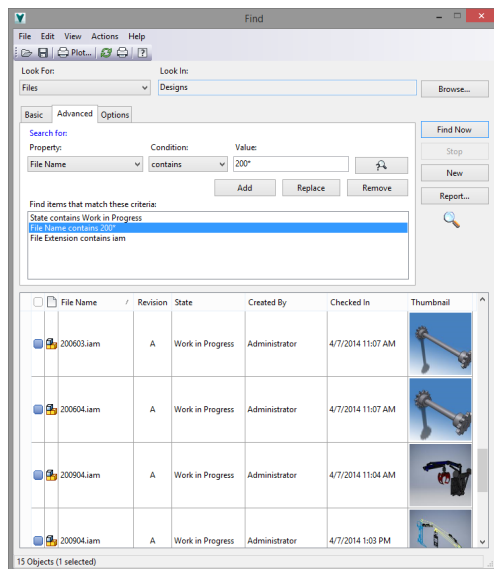


Data search and reuse

Shorten product development time—don't waste your work. The Vault product family helps you find digital design data and reuse it whenever possible.

Quick and simple searching

Use a range of methods, such as saved searches and shortcuts, to find and organize data. The Vault product line minimizes the time it takes to find information, so you can spend more time designing and less time hunting for data.



Improved data organization and search with property management

Control property indexing and access across file types. Specify exactly what embedded data in design files is captured and exposed for queries, filtering, and data organization. Improve data sharing with quick and accurate searching based on property sets.

Productivity tools for file maintenance

Edit and manipulate design files without breaking important application-specific links, such as AutoCAD Xrefs or Autodesk Inventor file relationships. By maintaining design integrity, you save hours of manual cleanup work.

Immediate 'Where Used' analysis

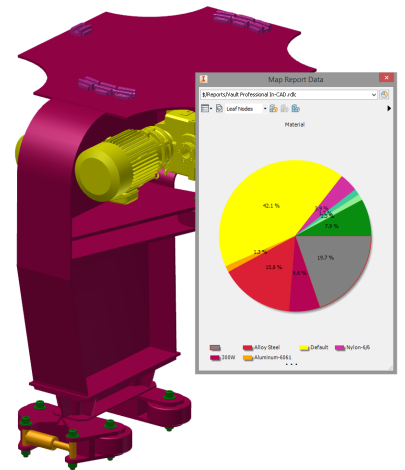
Understand the impact of a design change on multiple projects—before you make it. Track relationships between design files and view where specific files are used in each project.

Optimized data reuse

Save hours of design time—stop manually recreating or duplicating complex models and drawing sets. The Vault product family lets you copy a digital prototype—including all related files and documentation—for use in a new design. It also makes it easier to configure the files you want to replace, reuse, or copy.

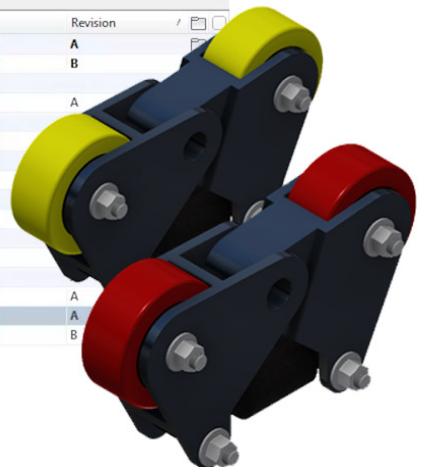
The screenshot shows the Vault interface with a list of files and their properties. The table has columns: Name, Id, Count, Action, State, and Revision. The files are listed in a tree view, with the selected file being 'V2.4 Passenger Seat.iam'.

Name	Id	Count	Action	State	Revision
V2.4 Passenger Seat.iam	69	1	Copy	Released	A
ADSK-#####MECH.iam	52	1	Copy	Released	B
Valvoline_premium_conventional_MO...	85	1	Remove		
EHFM30-D616Y-V4.iam	70	1		Released	A
HCR45A_60_800R_SS_B_PT1_8_Slider.ipt	71	1		Released	
Pivot Arm - Lower Guide Wheels.ipt	72	1		Released	
ADSK-#####FIT.iam	73	2	Replace	Released	
SideWheel Bolts.iam	74	1		Released	
Spring.ipt	75	1		Released	
Swingarm 1 - Lower Guide Wheel.ipt	76	1		Released	
Swingarm 1 - Upper Guide Wheel.ipt	77	1		Released	
Swingarm 2 - Lower Guide Wheel.ipt	78	1		Released	
Swingarm 2 - Upper Guide Wheel.ipt	79	1		Released	
Wheel Holder - Lower Guide Wheels.ipt	80	1		Released	A
ADSK-#####FIT.iam	81	2	Copy	Released	A
Frame.ipt	82	1		Released	B



Visual data management

Interpret large amounts of data easily by mapping it directly to your models inside Autodesk Inventor. See the current lifecycle state, engineering change order status, and whether a given part is purchased or manufactured—or build custom reports relevant to your project needs.



Revision control

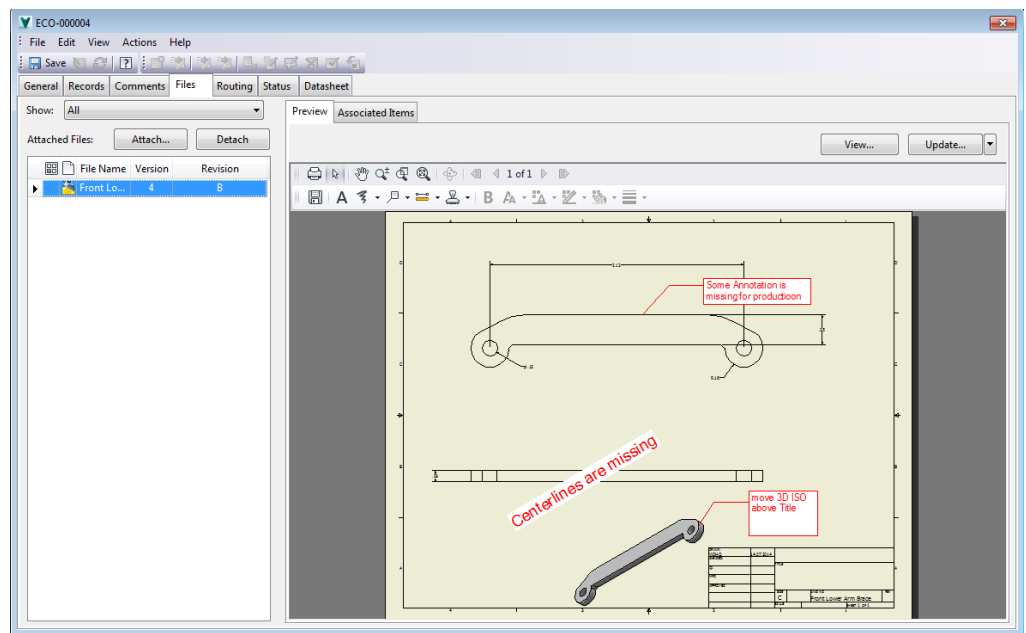
Keep control of revisions, from inside your design application. Track changes and versions, helping to reduce manufacturing and design errors and speed cycle times.

Interactive design review and markup

Include more people in the development process by publishing design files in a lightweight interactive format accessible to non-CAD users throughout the organization. Design files can be downloaded, reviewed, marked up, and shared back with the engineering team, facilitating a true concurrent engineering approach by enabling key stakeholders and subject matter experts to provide insights to improve the design.

Intuitive revision management

Audit and track the revision history of your data files from a single location. Reduce the chance of design and manufacturing errors by securely releasing and tracking files throughout the design cycle, helping make sure that team members access the correct version of data.

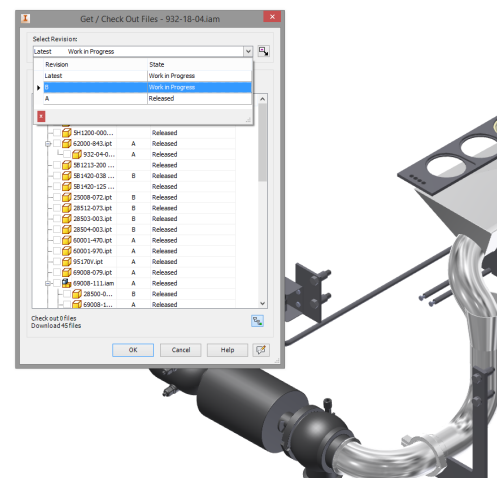
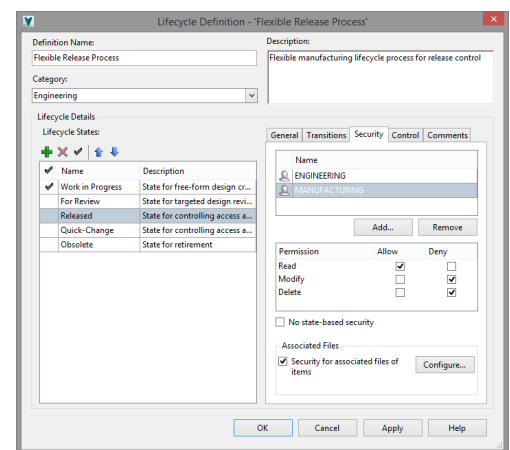


Manage data security from design concept to retirement

Manage critical aspects of design data at every stage of the lifecycle to help control data security and enforce organizational standards. Security management helps you give the right people access to the right data at the right time.

Explore design concepts

Capture the history of your design concepts with the Vault product family. You can iterate new ideas or revert to old ones, arriving at a final digital prototype more quickly. Create labels or snapshots that make it easier to reference and restore designs. You have the potential to reduce the overhead, errors, and lost data associated with manual backup and copy methods.



Utilities to batch-plot design data

Create, manage, and reuse print or plot jobs for all managed files. Autodesk Vault Workgroup, Vault Professional, and Vault Office fully support watermarking and stamping, so you spend less time on administrative tasks.

Release and engineering process management

Remove the bottlenecks from your engineering processes. Track, manage, and report lifecycle state and change order status for products in the development pipeline.

Lifecycle states

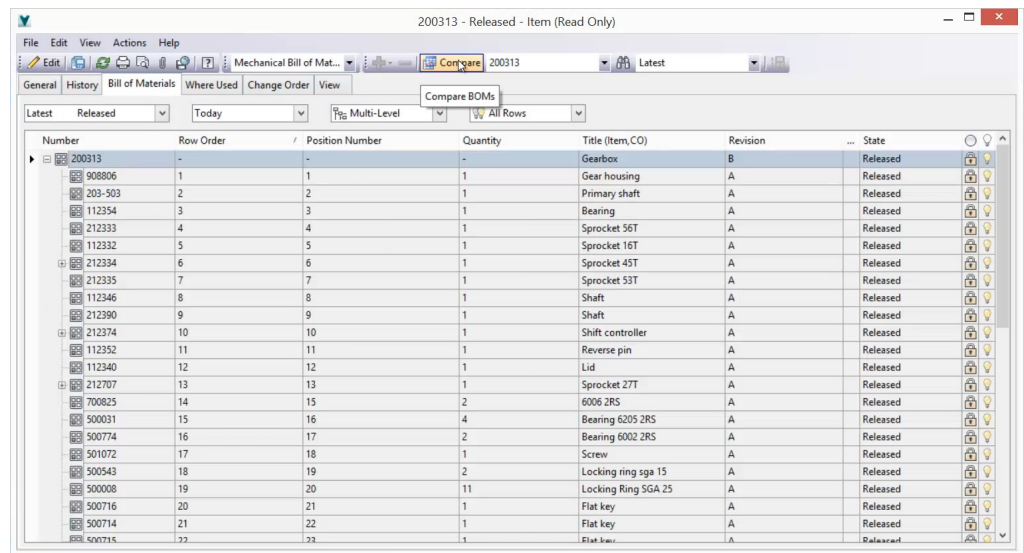
Assign lifecycle states—such as Work in Progress, For Review, or Released—to files and items that control access, behavior, and properties based on their current status in the development process. Create custom lifecycle definitions to be applied to different types of objects and define rules that specify how objects transition from one state to another.

Categories

Classify your project data and apply consistent lifecycle definitions, revision schemes, and user-defined properties to groups of similar objects, such as manufactured parts, purchased items, consumables, and documentation.

Automate engineering change orders

Manage engineering change orders (ECOs) through an intuitive graphical workflow interface that helps automate the process. Choose standard or configurable processes for release and engineering change order management, helping to avoid costly mistakes and remove process bottlenecks.



200313 - Released - Item (Read Only)

File Edit View Actions Help

Mechanical Bill of Mat... Compare BOMs 200313 Latest

General History Bill of Materials Where Used Change Order View Compare BOMs

Latest Released Today Multi-Level All Rows

Number	Row Order	Position Number	Quantity	Title (Item,CO)	Revision	State
200313	-	-	-	Gearbox	B	Released
908806	1	1	1	Gear housing	A	Released
209-503	2	2	1	Primary shaft	A	Released
112354	3	3	1	Bearing	A	Released
212333	4	4	1	Sprocket 56T	A	Released
112332	5	5	1	Sprocket 16T	A	Released
212334	6	6	1	Sprocket 45T	A	Released
212335	7	7	1	Sprocket 53T	A	Released
112346	8	8	1	Shaft	A	Released
212390	9	9	1	Shaft	A	Released
212374	10	10	1	Shift controller	A	Released
112352	11	11	1	Reverse pin	A	Released
112340	12	12	1	Lid	A	Released
212707	13	13	1	Sprocket 27T	A	Released
700825	14	15	2	6006 2RS	A	Released
500031	15	16	4	Bearing 6205 2RS	A	Released
500774	16	17	2	Bearing 6002 2RS	A	Released
501072	17	18	1	Screw	A	Released
500543	18	19	2	Locking ring sga 15	A	Released
500008	19	20	11	Locking Ring SGA 25	A	Released
500716	20	21	1	Flat key	A	Released
500714	21	22	1	Flat key	A	Released
500715	22	22	1	Flat key	A	Released

BOM management

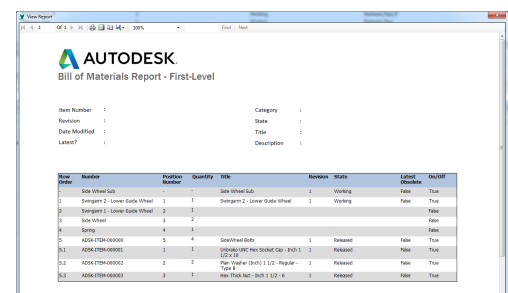
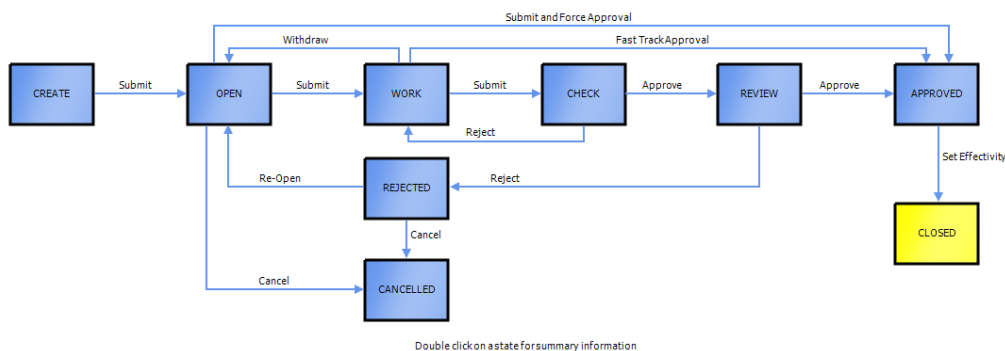
Create and maintain an accurate and complete manufacturing bill of materials (BOM) directly from your CAD model. Maintain complete control over your BOM, easily managing materials, quantities, and other required properties of the design.

Define custom objects and workflows

Document your business and process data without the need for files. Custom objects act as placeholders for important project information, ranging from something as simple as a list of contacts to more complex groupings of assets, tasks, and processes.

Report on project status

View the current status of a project by running reports on files, folders, and change orders using built-in or custom templates. Default reports include change order status, file and item lifecycle status, and a project dashboard.



AUTODESK

Bill of Materials Report - First-Level

Item Number : Category :
Revision : State :
Date Modified : Title :
Level? : Description :

Item Number	Revision	Quantity	State	Revision	State	Level	Default
1	1	1	Working	1	True	False	True
2	1	1	Working	1	True	False	True
3	1	1	Working	1	True	False	True
4	1	1	Working	1	True	False	True
5	1	1	Working	1	True	False	True
6	1	1	Working	1	True	False	True
7	1	1	Working	1	True	False	True
8	1	1	Working	1	True	False	True
9	1	1	Working	1	True	False	True
10	1	1	Working	1	True	False	True
11	1	1	Working	1	True	False	True
12	1	1	Working	1	True	False	True
13	1	1	Working	1	True	False	True
14	1	1	Working	1	True	False	True
15	1	1	Working	1	True	False	True
16	1	1	Working	1	True	False	True
17	1	1	Working	1	True	False	True
18	1	1	Working	1	True	False	True
19	1	1	Working	1	True	False	True
20	1	1	Working	1	True	False	True
21	1	1	Working	1	True	False	True
22	1	1	Working	1	True	False	True
23	1	1	Working	1	True	False	True
24	1	1	Working	1	True	False	True
25	1	1	Working	1	True	False	True
26	1	1	Working	1	True	False	True
27	1	1	Working	1	True	False	True
28	1	1	Working	1	True	False	True
29	1	1	Working	1	True	False	True
30	1	1	Working	1	True	False	True
31	1	1	Working	1	True	False	True
32	1	1	Working	1	True	False	True
33	1	1	Working	1	True	False	True
34	1	1	Working	1	True	False	True
35	1	1	Working	1	True	False	True
36	1	1	Working	1	True	False	True
37	1	1	Working	1	True	False	True
38	1	1	Working	1	True	False	True
39	1	1	Working	1	True	False	True
40	1	1	Working	1	True	False	True
41	1	1	Working	1	True	False	True
42	1	1	Working	1	True	False	True
43	1	1	Working	1	True	False	True
44	1	1	Working	1	True	False	True
45	1	1	Working	1	True	False	True
46	1	1	Working	1	True	False	True
47	1	1	Working	1	True	False	True
48	1	1	Working	1	True	False	True
49	1	1	Working	1	True	False	True
50	1	1	Working	1	True	False	True
51	1	1	Working	1	True	False	True
52	1	1	Working	1	True	False	True
53	1	1	Working	1	True	False	True
54	1	1	Working	1	True	False	True
55	1	1	Working	1	True	False	True
56	1	1	Working	1	True	False	True
57	1	1	Working	1	True	False	True
58	1	1	Working	1	True	False	True
59	1	1	Working	1	True	False	True
60	1	1	Working	1	True	False	True
61	1	1	Working	1	True	False	True
62	1	1	Working	1	True	False	True
63	1	1	Working	1	True	False	True
64	1	1	Working	1	True	False	True
65	1	1	Working	1	True	False	True
66	1	1	Working	1	True	False	True
67	1	1	Working	1	True	False	True
68	1	1	Working	1	True	False	True
69	1	1	Working	1	True	False	True
70	1	1	Working	1	True	False	True
71	1	1	Working	1	True	False	True
72	1	1	Working	1	True	False	True
73	1	1	Working	1	True	False	True
74	1	1	Working	1	True	False	True
75	1	1	Working	1	True	False	True
76	1	1	Working	1	True	False	True
77	1	1	Working	1	True	False	True
78	1	1	Working	1	True	False	True
79	1	1	Working	1	True	False	True
80	1	1	Working	1	True	False	True
81	1	1	Working	1	True	False	True
82	1	1	Working	1	True	False	True
83	1	1	Working	1	True	False	True
84	1	1	Working	1	True	False	True
85	1	1	Working	1	True	False	True
86	1	1	Working	1	True	False	True
87	1	1	Working	1	True	False	True
88	1	1	Working	1	True	False	True
89	1	1	Working	1	True	False	True
90	1	1	Working	1	True	False	True
91	1	1	Working	1	True	False	True
92	1	1	Working	1	True	False	True
93	1	1	Working	1	True	False	True
94	1	1	Working	1	True	False	True
95	1	1	Working	1	True	False	True
96	1	1	Working	1	True	False	True
97	1	1	Working	1	True	False	True
98	1	1	Working	1	True	False	True
99	1	1	Working	1	True	False	True
100	1	1	Working	1	True	False	True

Simple administration and configuration

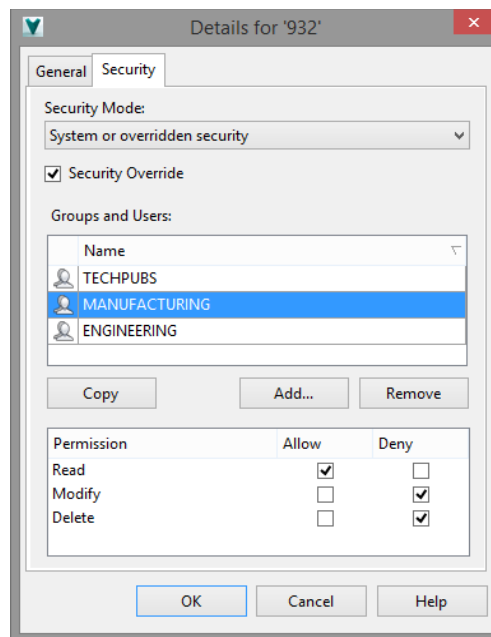
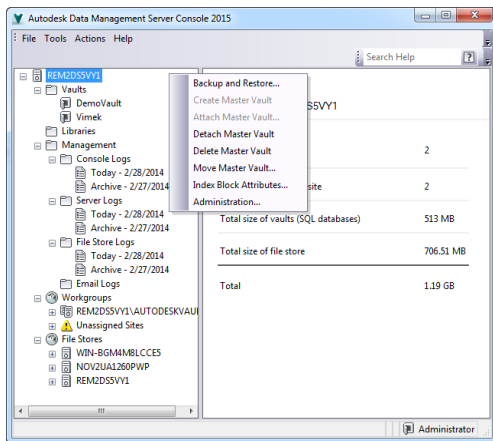
Deploy quickly to start enjoying the benefits of effective data management right away.

Simple data loading

With the Autodesk Vault family of products, it doesn't take much effort to rapidly load large quantities of design data and supporting documentation. It's easy and quick to gather, analyze, prepare, and load data from Autodesk Inventor and AutoCAD, plus flat-file data such as PDF files and images. You can even detect and repair missing references and remove duplicate files.

Easy administration

Vault Workgroup and Vault Professional provide tools to manage your Vault server, to help you experience maximum uptime. Intuitive administrative tools make server management easier even for those with minimal IT knowledge.

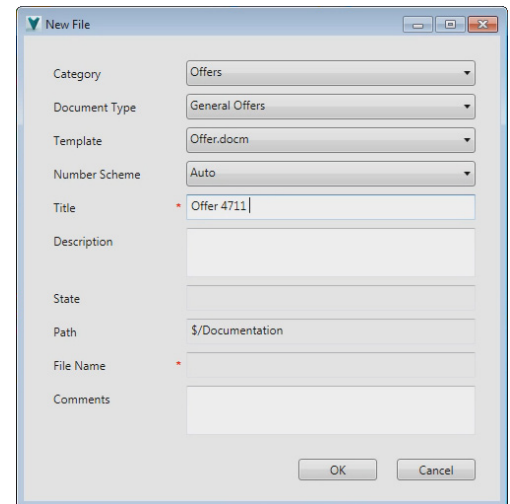


Configurable security and access control

Safeguard your designs with control over the who, where, and when of data access. Secure designs by folder or file—and restrict who can change the lifecycle state or access a file in a particular lifecycle state.

Support for company standardization

Vault Data Standard provides out of the box integration with Autodesk Inventor, AutoCAD, and AutoCAD Mechanical. Customizable data entry forms enable standards enforcement at the point of file creation, helping to ensuring data standard compliance. The Vault family of products also helps companies support standards such as ISO 9000 and RoHS.



Active Directory authentication

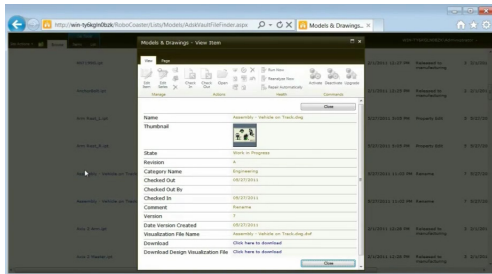
Easily manage users by importing your existing Active Directory accounts or groups while retaining the existing group memberships and permissions in Autodesk Vault.

Business system integration and external collaboration

Connect your engineering data with your people, processes, and business systems.

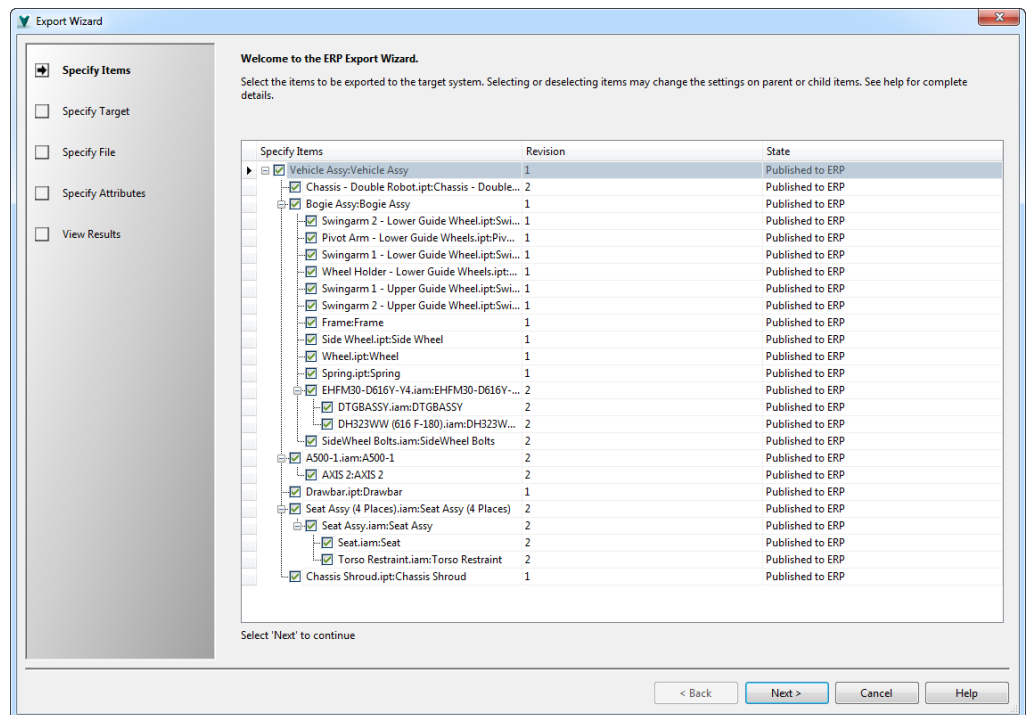
Microsoft SharePoint

Make your engineering data visible to your entire team by integrating Autodesk Vault and Microsoft® SharePoint® collaboration software. Extended team members can search, preview, and download visualization files stored in Vault and participate in engineering processes—such as change order requests and reviews—using SharePoint workflows to share information with the rest of the organization.



Microsoft Outlook

Store and archive important email communications regarding a project directly inside Vault. Email can be checked in manually or automatically and then linked to process-related objects such as ECOs or tasks inside Vault.



Autodesk PLM 360

Connect Vault with Autodesk® PLM 360 software to centrally manage the entire product lifecycle. Map folders from Vault to new product introduction (NPI) and project workflows, or drive the lifecycle state of files and items using the release and change order processes you have defined inside PLM 360.

Jitterbit

Establish links between Vault and all your other critical business systems using Jitterbit as a central hub for creating and maintaining integrations. Connect to ERP, MRP, CRM, or virtually any on-premise or cloud application.

Autodesk Buzzsaw

When purchased with Autodesk® Subscription, Vault Professional comes with access to Autodesk® Buzzsaw® software, providing an integrated solution accessible from local workstations, the cloud, and mobile devices. Vault administrators can also set up synchronization between Vault and Buzzsaw folders.

The Autodesk Vault family of products

Autodesk Vault data management software, part of the Autodesk solution for Digital Prototyping, helps design and engineering teams control project-related design data, manage change processes, minimize costly mistakes, and more efficiently revise and release designs.

Autodesk Vault products

Autodesk Vault Workgroup

Autodesk Vault Workgroup data management software helps you improve productivity and speed design cycle times by making it easier to create and share Digital Prototyping information across workgroups. It includes functionality for data management, data search and reuse, revision control, and simple administration and configuration.

Autodesk Vault Professional

Autodesk Vault Professional is the most comprehensive data management product offered by Autodesk. It includes all of the functionality of Vault Workgroup, plus functionality for tracking engineering change orders, managing bills of materials, and exchanging data with other business systems.

Autodesk Vault Office

Autodesk Vault Office simplifies access of existing Vault Workgroup or Vault Professional deployments to non-CAD users who need to manage their own project-related documents. With both web and desktop client access options, team members can participate in review, release, and change order processes.

	Vault Workgroup	Vault Professional	Vault Office*
File management tools	✓	✓	✓
Single workgroup	✓	✓	✓
Fast searching	✓	✓	✓
Autodesk CAD integrations	✓	✓	
Data reuse tools	✓	✓	
File revision control and lifecycles	✓	✓	✓
Automatic file naming	✓	✓	✓
Access for non-CAD users	✓	✓	✓
Utilities for batch plotting	✓	✓	✓
File and folder security	✓	✓	✓
Reporting	✓	✓	✓
Multisite replication		✓	
Server-based DWF™ publishing		✓	
'Query, View, and Print' web client		✓	✓
Bill of materials management		✓	✓
Engineering change management		✓	✓
Coexist with enterprise business systems		✓	
*All Vault Office capabilities require a Vault Workgroup or Vault Professional deployment. Certain features of Vault Office are available only when used with Vault Professional.			

Autodesk Digital Prototyping is an innovative way for you to explore your ideas before they're even built. It's a way for team members to collaborate across disciplines. And it's a way for individuals and companies of all sizes to get great products into market faster than ever before. From concept through design, manufacturing, marketing, and beyond, Autodesk Digital Prototyping streamlines the product development process from start to finish.

Learn more or purchase

Access specialists worldwide who can provide product expertise, a deep understanding of your industry, and value that extends beyond your software. To license Autodesk Vault software, contact an Autodesk Authorized Reseller. Locate a reseller near you at [**www.autodesk.com/reseller**](http://www.autodesk.com/reseller).

Autodesk Education

Autodesk offers students and educators a variety of resources to help ensure students are prepared for successful design careers, including access to free* software, curricula, training materials, and other resources. Anyone can get expert guidance at an Autodesk Authorized Training Center (ATC®) site, and validate skills with Autodesk Certification. Learn more at [**www.autodesk.com/education**](http://www.autodesk.com/education).

Autodesk Subscription

Autodesk® Maintenance Subscription gives you an advantage with upgrades to the latest software releases, flexible licensing rights, powerful cloud services, and technical support.** Learn more at [**www.autodesk.com/maintenance-subscription**](http://www.autodesk.com/maintenance-subscription).

Autodesk 360

The Autodesk® 360 cloud-based framework provides tools and services to extend design beyond the desktop. Streamline your workflows, effectively collaborate, and quickly access and share your work anytime, from anywhere. Learn more at [**www.autodesk.com/autodesk360**](http://www.autodesk.com/autodesk360).

*Free products are subject to the terms and conditions of the end-user license agreement that accompanies download of this software.

**All Subscription benefits are not available for all products in all geographies. Please consult your Autodesk reseller or sales representative for more information.

Autodesk, ATC, Autodesk Inventor, the Autodesk logo, AutoCAD, Buzzsaw, DWF, and Inventor are registered trademarks or trademarks of Autodesk, Inc., and/or its subsidiaries and/or affiliates in the USA and/or other countries. All other brand names, product names, or trademarks belong to their respective holders. Autodesk reserves the right to alter product and services offerings, and specifications and pricing at any time without notice, and is not responsible for typographical or graphical errors that may appear in this document.

© 2014 Autodesk, Inc. All rights reserved.