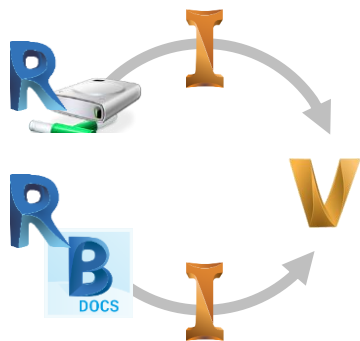


Autodesk® Vault 2021 What's New



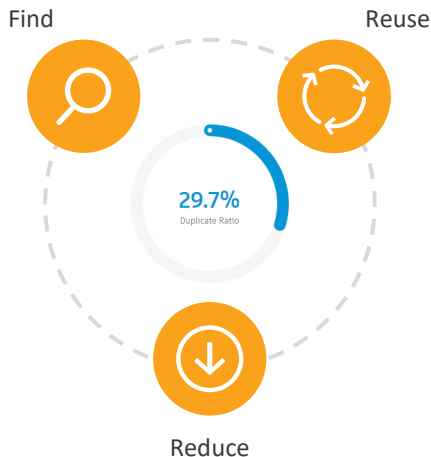
Vault 2021: More Value for Subscribers

Productivity-boosting functionality you can expect



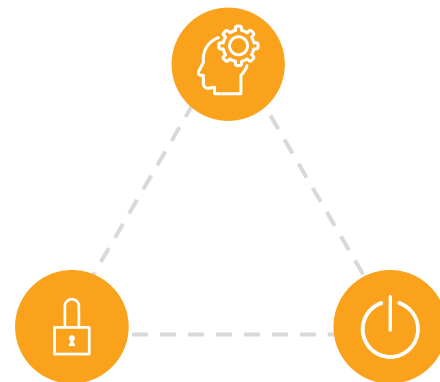
Productivity for CAD Users

Supports Inventor and Revit interoperability and adds significant workflow and usability improvements



Smart Duplicate Reduction

Compares 3D shapes and delivers insights on duplicate content



More Efficiency for Administrators

Allows more granularity within the security model and minimizes deployment and maintenance downtime

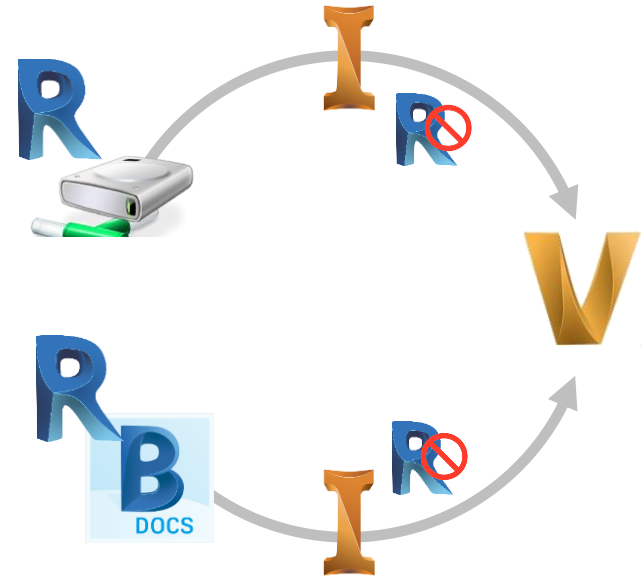
Productivity for CAD Users

The background is an abstract, low-poly geometric design. It features several interconnected nodes and lines, creating a network-like structure. The color palette is primarily warm, consisting of various shades of orange, yellow, and light brown. The nodes are represented by small, textured spheres, some of which are larger and more prominent than others. The lines are thin and white, connecting the nodes in a complex, non-linear fashion. The overall effect is that of a modern, digital, and interconnected environment, likely representing a CAD model or a network of data points.

Vault 2021 Supports Inventor and Revit interoperability

For custom fabricators that work in the building and infrastructure industry, Vault 2021 supports the new Inventor and Revit interoperability

- Revit data is stored and archived in **Network drive** or **BIM 360**
 - The data is referenced (incl. links) in Inventor and gets synced
- Revit data is not archived and managed in Vault, but Vault can check in Inventor files properly and open the files properly and resolve any linked Revit files

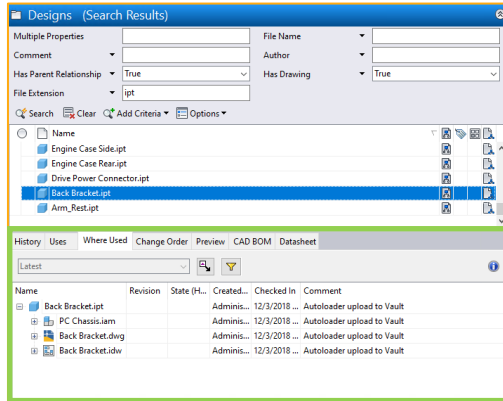


Unused document detection

Vault 2021 can help you clean up unused designs and avoid releasing them

New Property “Has Parent Relationship” to easily recognize orphaned files.
Can be used in Filter/Saved Search, state transition, and much more...

USED DESIGN



Designs (Search Results)

Multiple Properties: File Name, Author, Has Parent Relationship: True, Has Drawing: True, File Extension: .ipt

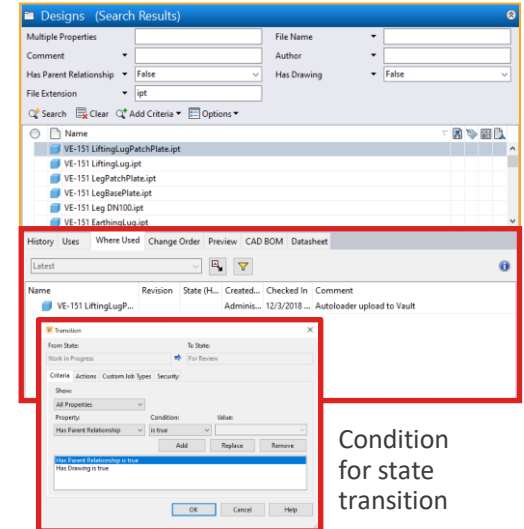
Name	Revision	State (H...)	Created...	Checked In	Comment
Engine Case Side.ipt					
Engine Case Rear.ipt					
Drive Power Connector.ipt					
Back Bracket.ipt					
Arm_Rest.ipt					

History Uses Where Used Change Order Preview CAD BOM Datasheet

Name	Revision	State (H...)	Created...	Checked In	Comment
Back Bracket.ipt			Adminis... 12/3/2018 ...		Autoloader upload to Vault
PC Chassis.ipt			Adminis... 12/3/2018 ...		Autoloader upload to Vault
Back Bracket.dwg			Adminis... 12/3/2018 ...		Autoloader upload to Vault
Back Bracket.idw			Adminis... 12/3/2018 ...		Autoloader upload to Vault



UNUSED DESIGN



Designs (Search Results)

Multiple Properties: File Name, Author, Has Parent Relationship: False, Has Drawing: False, File Extension: .ipt

Name	Revision	State (H...)	Created...	Checked In	Comment
VE-151 LiftingLugPatchPlate.ipt					
VE-151 LiftingLug.ipt					
VE-151 LegPatchPlate.ipt					
VE-151 LegBasePlate.ipt					
VE-151 Leg DN100.ipt					
VE-151 Earthing.Lua.ipt					

History Uses Where Used Change Order Preview CAD BOM Datasheet

Name	Revision	State (H...)	Created...	Checked In	Comment
VE-151 LiftingLugP...			Adminis... 12/3/2018 ...		Autoloader upload to Vault

Transition

From State: Back in Progress To State: For Review

Criteria / Actions: Custom Job Type Security

Property	Condition	Value
Has Parent Relationship	Is True	

Has Parent Relationship Is True

Has Drawing Is True

OK Cancel Help

Condition for state transition

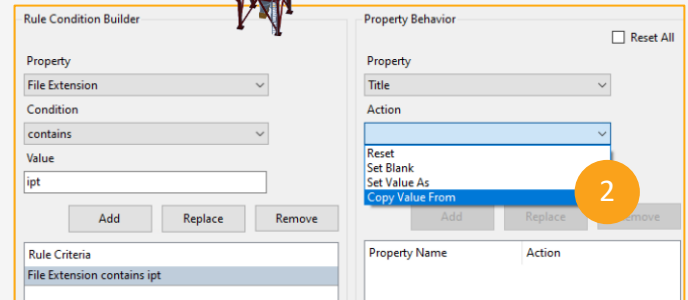
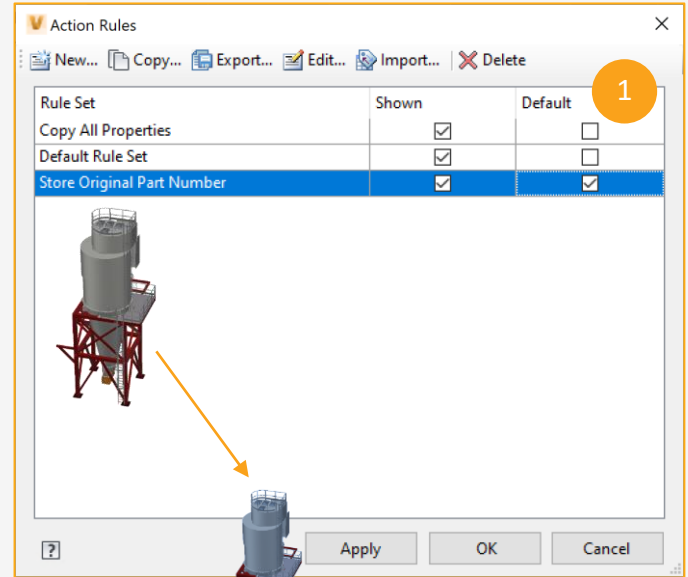
Copy design

Customer Request

Many companies have very strict controls over properties and standards enforcement

Deliverable

- Copy Design Rule Sets are stored on the server instead of the local disk
 - Configure, export, import rulesets and enforce ruleset for all users
- Set a rule to copy a UDP value from the original file to a different UDP in the new file e.g. for original part number, source drawing file etc.



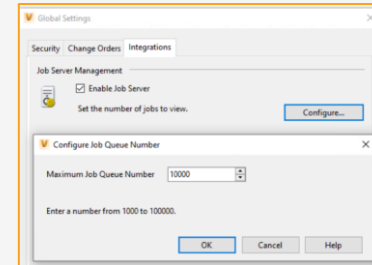
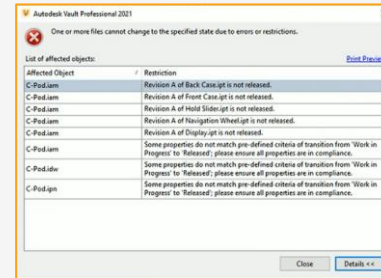
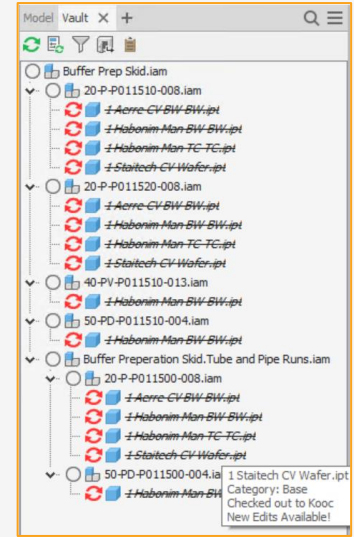
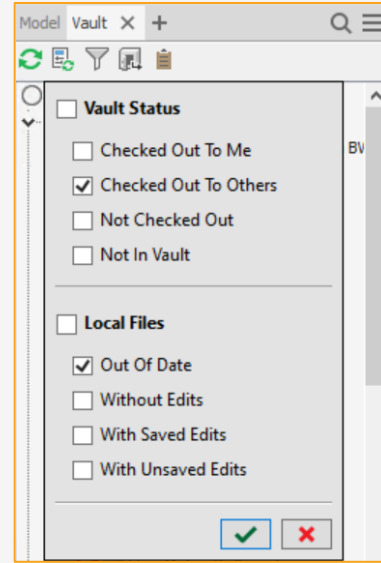
Remove friction

Value

Remove friction for more productivity

Deliverable

- Add a **New Filter** to show out of date files to quickly retrieve updated files
- Change state condition is batched for actions including Files, Folders, and Items and presented in one dialog instead of separately and every time – huge time savings
- Option to show more than 1000 jobs in Job Queue



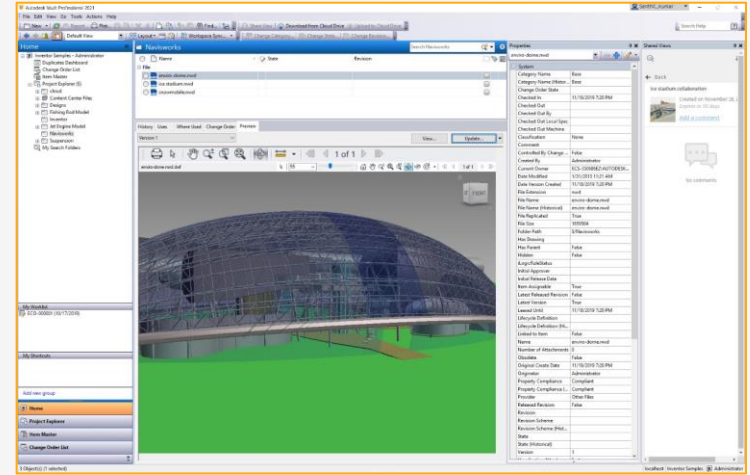
Navisworks preview and Shared Views

Value

Share Navisworks information to a wider audience for consumption and review

Deliverable

- Generate DWF files for Navisworks and expose them in the preview
- Shared Views capabilities available for Navisworks files



Visualization Attachment for Navisworks files

Currently, Vault does not create visualization attachments for Navisworks files

DWF navisworks, PDM-24117, Visualization Attachment

 Add tags

115 Votes

9 Comments (0 New)

 Report

Smart Duplicate Reduction

The background features a complex, abstract design with overlapping, semi-transparent orange and white geometric shapes. These shapes are interconnected by a network of thin white lines, creating a sense of depth and connectivity. The overall aesthetic is modern and technical, with a focus on geometric forms and light colors.

Manage new part

Challenges

A new part is not just about design time, it is about time and costs of documenting, validating, producing and managing the same physical part again and again.



The annual carrying costs of introducing a new part number range between \$4,500 and \$23,000 per item*

- ✓ Prototyping
- ✓ Testing
- ✓ Production
- ✓ Supplying
- ✓ Stocking



*According to The Aberdeen Group, a leading information technology and business intelligence research analyst

Duplicate reduction

Value for subscriber

Deliverable

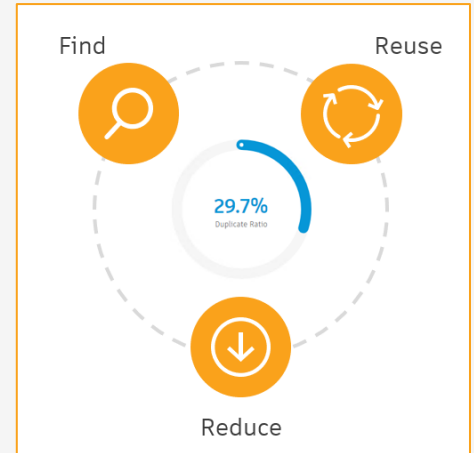
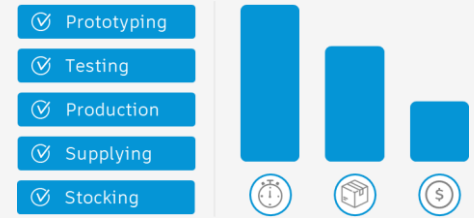
- Understand the duplicate ratio within environment
- Clean up the existing design from duplicate parts during review/ release process and before check in process for external parts

Value

- Reduce time to market and increase profitability by reducing cost after design phase and avoid introducing quality issues
- No disruption for mechanical engineers by allowing them to continue to have the freedom to design the way they want



The annual carrying costs of introducing a new part number range between \$4,500 and \$23,000 per item*



Data analytics and duplicate reduction

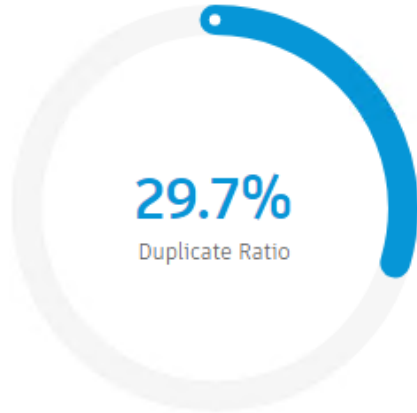
New functionality

Tell me about my data. I need more insights.
How big is the problem in my environment?
Do I need to take any action? If so which actions?

DATA ANALYTICS & INSIGHTS



Tom
Engineering
Manager



Detect duplicates and
promote more re-use

I want to continue to have the freedom to design how I want,
but before releasing the design I want
to know whether duplicate parts are available?

DUPLICATE REDUCTION



Christina
Mechanical
Engineer



Perform geometric search in Inventor and easily
replace duplicate parts workflow

The background features a complex, abstract design with overlapping, semi-transparent orange and white geometric shapes. These shapes are interconnected by a network of thin white lines, creating a sense of depth and connectivity. The overall aesthetic is modern and technological, with a focus on clean lines and vibrant colors.

More Efficiency for Administrators

More efficiency for administrators



Vault 2021 allows more granularity within the security model and minimizes deployment and maintenance downtime

Restrict file download access

Audit log

Hide disabled users and groups

Resizable security dialog

Easily identify user with Admin role when logged in

Flexible instance name

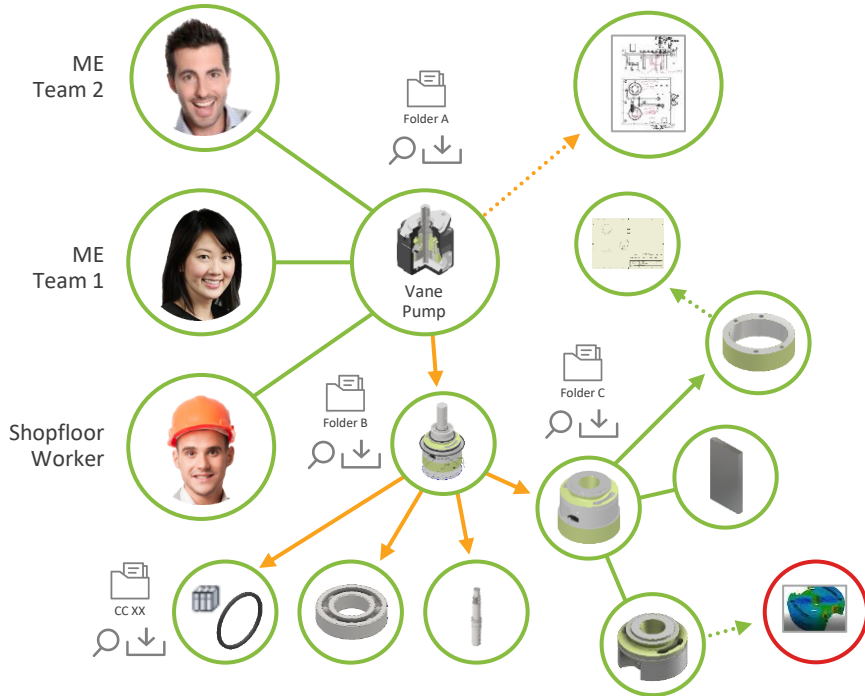
Purge historical data

Quick file store validation

Vault 2020 security model

Need more granularity

Design/Folder A/Folder B/Folder C



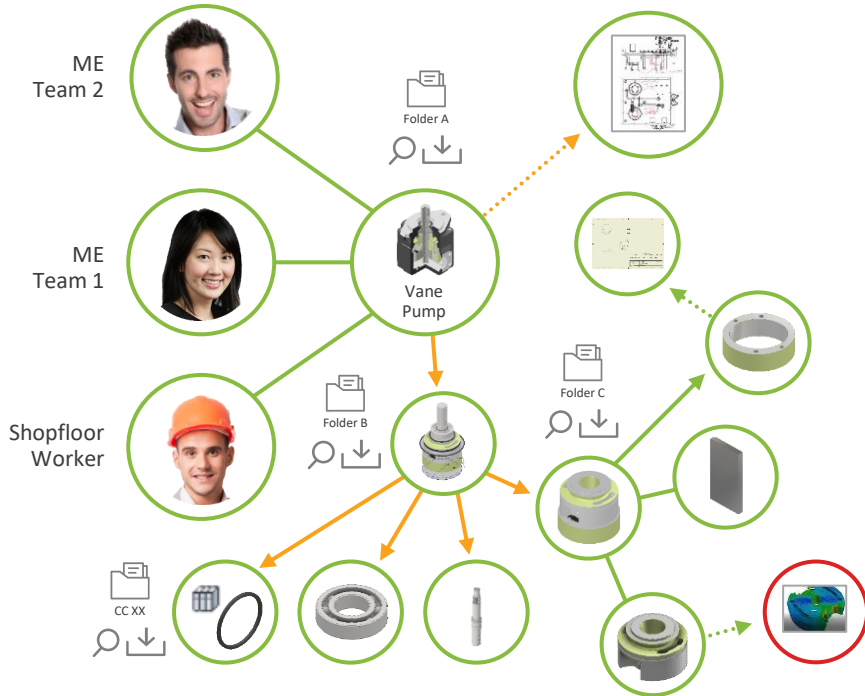
Read access also allows file download
Shopfloor worker and ME from Team 2 can access and download all files including sensitive data

Security model in 2021

More granularity!



Design/Folder A/Folder B/Folder C



	Folder A Folder B	Folder A Folder B
	Folder A Folder B	Folder A Folder B
	Folder A Folder B	Folder A Folder B
	Folder A Folder B	Folder A Folder B

Read access: meta data like Used/Where Used, Thumbnail
Download access: appropriate groups and users download the right design data

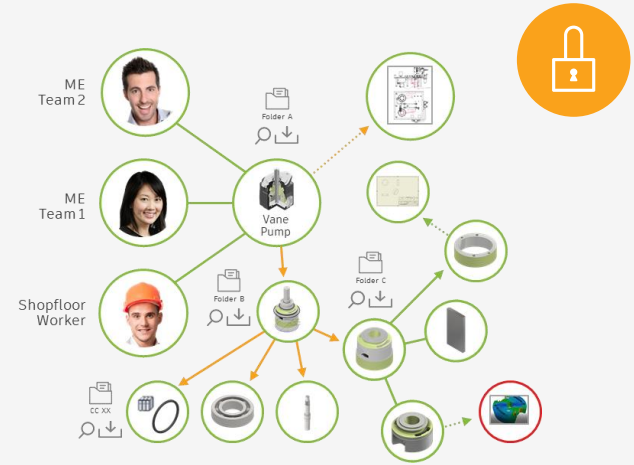
More granularity benefits

Value

- Increase cross department and external collaboration while continue to protect your data
- Eliminate extra work to re-organize your data to fit security system requirements
- Separate audit logs & configure the system with ease
- Address the most requested ideas in the forum

What

- Grant read access to the appropriate groups and users role based while preventing data download
- Flexibility to restrict download access to sensible design data while continue to allow read access for meta data for search, reports etc. object & Lifecycle based
- Track download & Audit Log & several usability enhancements (resizable dialog, hide disabled users and much more)



	Folder A Folder B	Folder A Folder C	Folder A Folder B
	Folder A Folder B	Folder A Folder C	Folder B Folder C
	Folder A Folder B	Folder A Folder C	Folder C

What does this mean for your existing data?











You have a new download permission

Migrate existing roles, objects, and lifecycle security read permission to read plus download permissions

Flexible

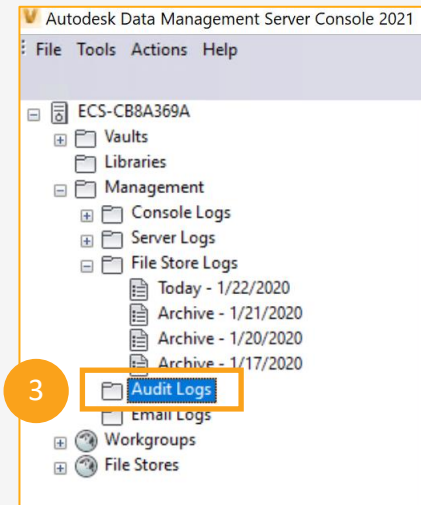
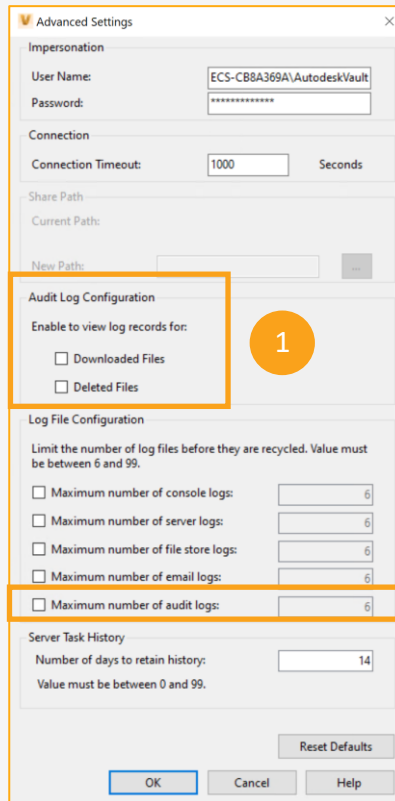
Read/Download permissions can be applied to roles, objects, and lifecycle state

Note: DWF & PDF files continue to have a different ACL than CAD files

Operation	Read	Download
Properties Read (incl. Thumbnail)		
Search, Reports, Send a link		
Open, View in Window, Insert into CAD		
GET, File Download in Thin Client, Pack & Go, Copy Design		
Create PDF, DWF, Edit/ Update Properties, Job Processor		
Share Views, Update View, Manual Upload to Cloud Drive, Job Processor		

Track download and audit log

- Enhanced logging for download to track “real” download operations only
 - GET, Open, View in Window, Insert into CAD, Update View
 - Pack & Go, Send File, Share Views
- UI setting to turn on/off logging for download and delete
- Separate Audit Logs file for download and delete



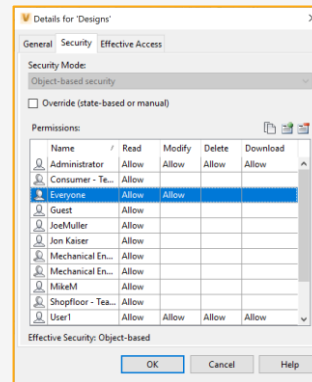
Usability enhancements in Object security dialog.

Customer request

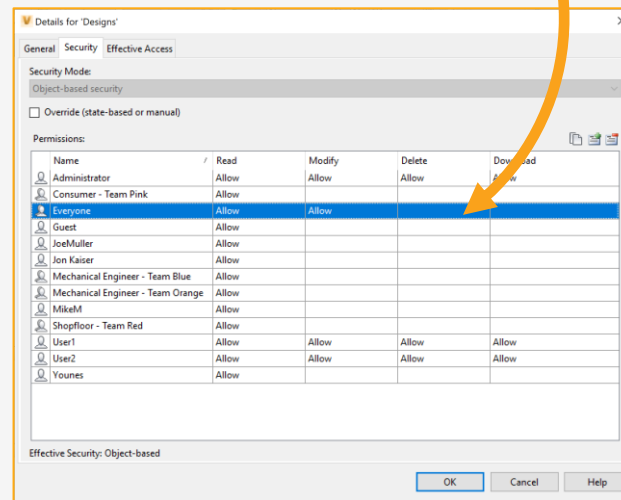
Very difficult today if you are managing 100's of users to navigate through the Object security dialog

Deliverable

Resizable Details dialog for better usability on Security Tab



Vault 2020



Vault 2021

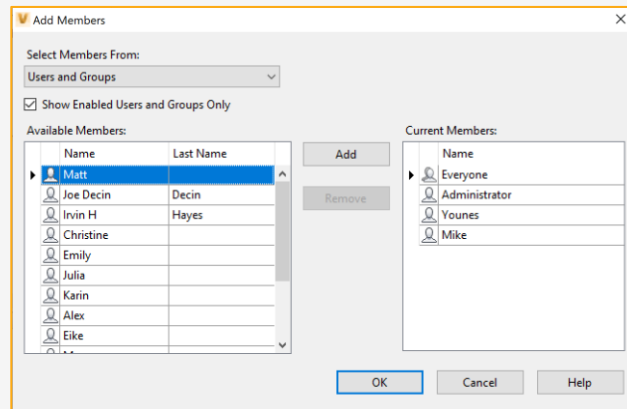
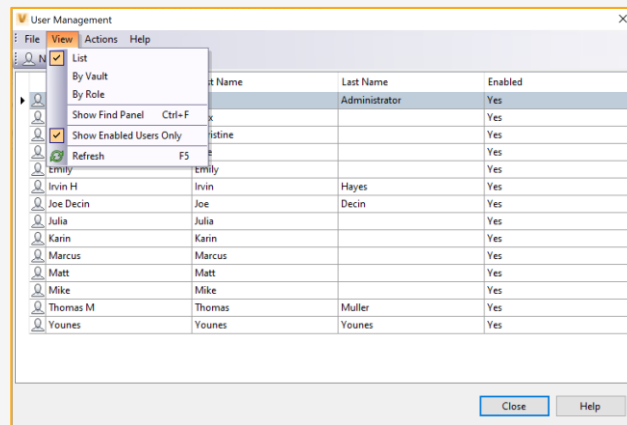
Usability enhancements in user management dialogs

Customer request

Easy administration of disabled users

Deliverable

Option to filter out disabled users and groups in Users, Groups management dialogs as well as in “add Members dialogs” within object security tab, state security tab, transition definition, etc.



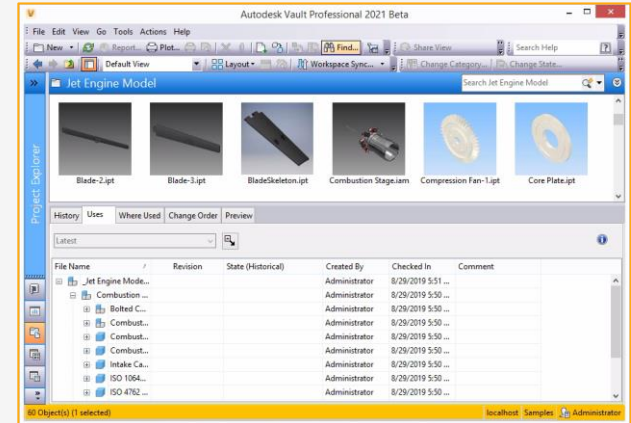
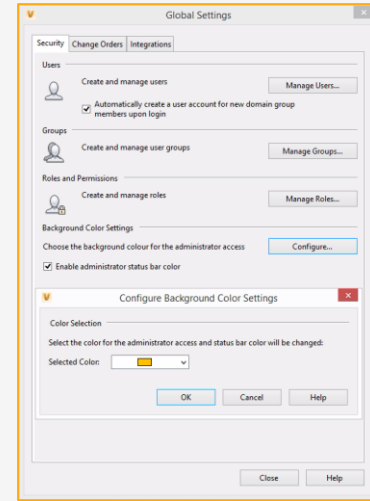
Usability enhancements for vault admins

Customer request

“Easy Recognize” login user with administrator permissions

Deliverable

Configure status bar color in security tab for users assigned to admin roles



Minimize downtime for backup / maintenance



Customer challenge

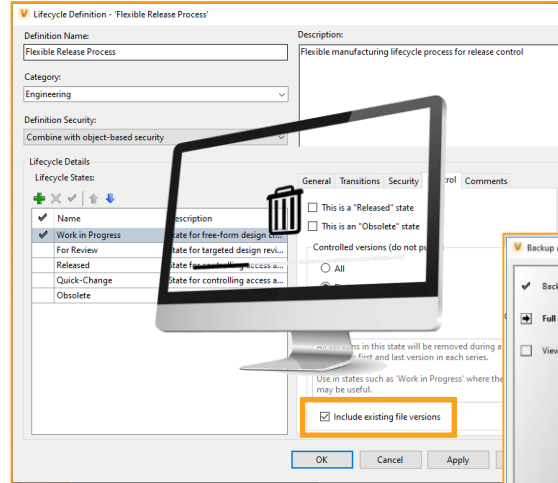
Backup, restore upgrade workflows are taking a very long time by big databases and file-stores

What

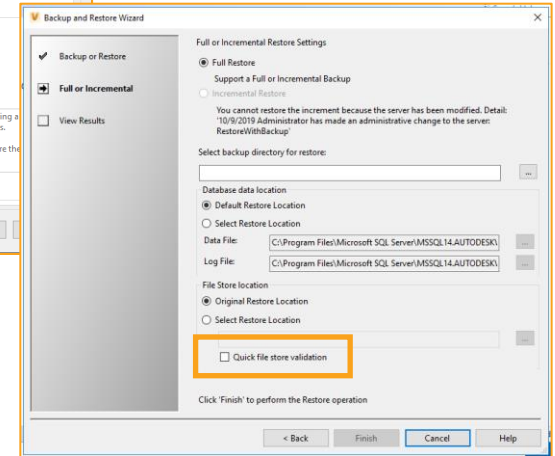
- Allow purge for legacy versions which are under lifecycle control
- File store validation is optimized
- You can also use quick file store option for quick validation

Value

Minimize downtime during Backup, Restore, and upgrade by reducing file stores and database size



New purge option to include existing file versions per state in the control tab



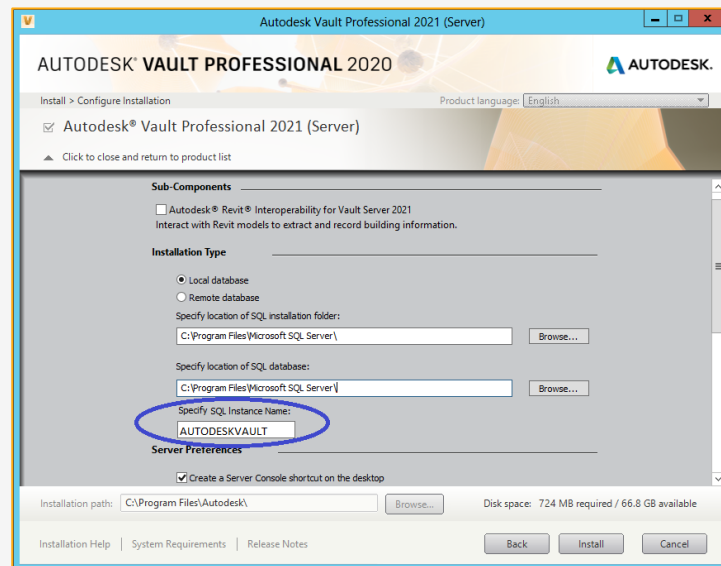
Quick File store validation option within attach and restore

More flexible deployment



Allows Vault installation/configuration to connect to an Instance not named AUTODESKVAULT

- Naming conventions that must be kept for company standards
- When several Vault Servers reside in the same IT infrastructure
- Separate DEV/ QA environment that is running a mirror image of production Vault
- Several Vault Server versions within the same SQL Server



More efficiency for Administrators and collaboration workflows

Value

- Increase cross-department and external collaboration while protecting data and eliminating extra work to reorganize data to fit security system requirements
- Separate audit logs and ability to configure the system with ease
- Reduce file store size impact downtime during Backup and Restore
- Comply and IT naming converting and maintenance costs for test environment

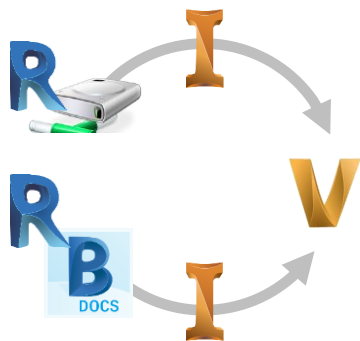
Deliverable

- Grant read access to the appropriate groups and user roles while preventing data download
- Flexibility to restrict download access of sensitive data while allowing read access of meta data for search, reports, etc. by object and lifecycle
- Track download and audit log and several usability enhancements (resizable dialog, hide disabled users, and much more)
- Quick file store validation and purge historical data functionality
- Flexible instance name



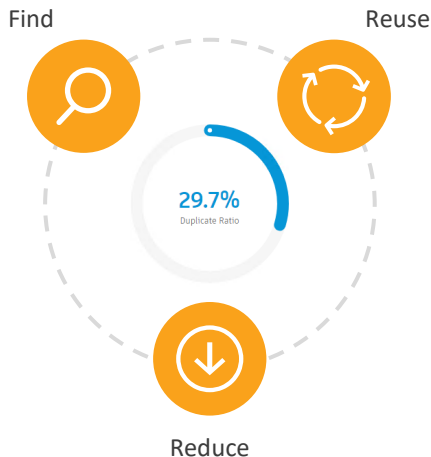
Vault 2021: More Value for Subscribers

Productivity-boosting functionality you can expect



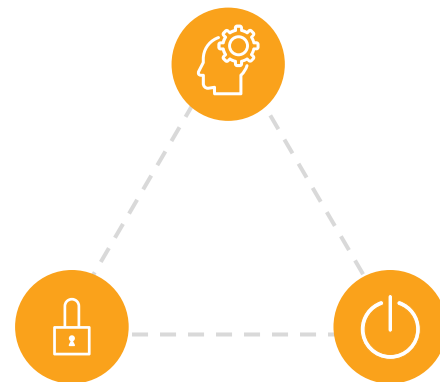
Productivity for CAD Users

Supports Inventor and Revit interoperability and adds significant workflow and usability improvements



Smart Duplicate Reduction

Compares 3D shapes and delivers insights on duplicate content



More Efficiency for Administrators

Allows more granularity within the security model and minimizes deployment and maintenance downtime



AUTODESK[®]

Make anything[™]